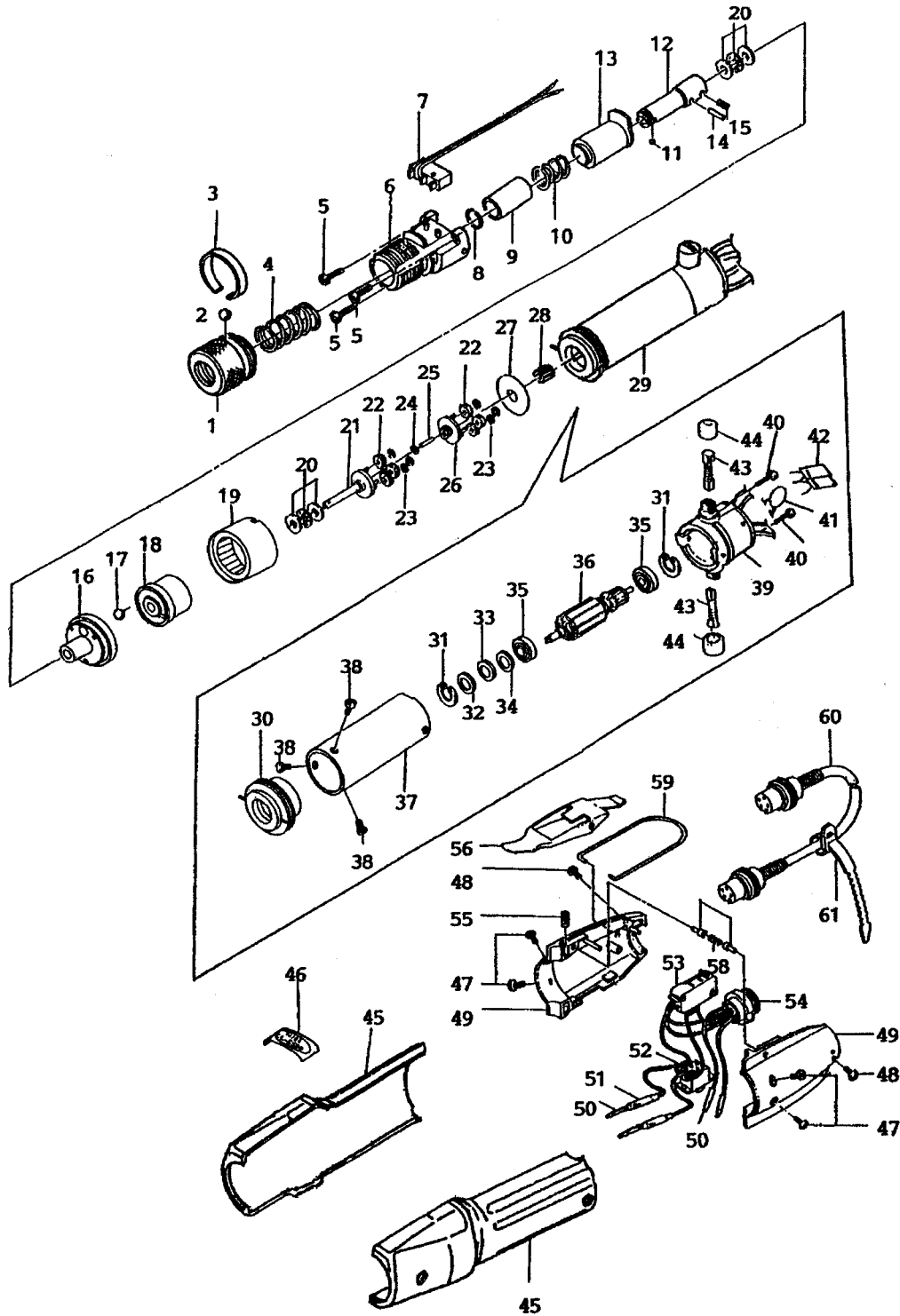




Spare Parts List

Hios SS-6500 & SS-6500X





Spare Parts List

Hios SS-6500 & SS-6500X

Ref#	Part Name	Part#	Ref#	Part Name	Part#
	Torque Adjusting Nut Assembly 1 – 3	41-CL65-NT		Upper Planet Cage Assembly 26,22,23	41-CL65-3310
1	Torque Adjusting Nut	41-CL65-0010	26	Upper Planet Cage	41-CL65-0310
2	Knotting Ball 3	41-Ball-03	27	Grease Seal	41-CL65-0320
3	Knotting Ball Band	41-CL65-0030	28	Pinion Gear	41-CL65-0330
4	Torque Adjusting Spring (yellow)	41-CL65-0040	29	Motor	41-CL65-0341
	Gear Assembly w/Torque Adj. Bolt (5-27, w/o 7)		30	Motor Front Cover	41-CL65-0360
	For HIOS Shank	41-SS65-GRB	31	Stop Ring	41-CL65-0370
	For HEX Shank	41-SS65X-GRB	32	Wave Washer	41-CL65-0380
5	Torque Adj. Bolt Set Screw x3	220218	33	Rotor Adjusting Washer 0.1	41-CL65-0390
6	Torque Adjusting Bolt	41-CL65-0090	34	Rotor Adjusting Washer 0.2	41-CL65-0400
7	Limit Switch	41-CL4-0230	35	Motor Bearing (x2)	41-CL65-0410
	Joint Shaft Assembly 8 – 12		36	Rotor	41-CL65-0420
	For HIOS Shank	41-CL65-JS	37	Magnet Case	
	For HEX Shank	41-CL65X-JS	38	Motor Body Set Screw 3x4 (x3)	220201
8	Collar Stopper	41-CL65-0110		Motor End Cover Assembly	
9	Joint Shaft Collar			31, 35, 39-44	41-CL65NL-3470
	For HIOS Shank	41-CL65-0120	39	Motor End Cover	41-CL65-0470
	For HEX Shank	41-CL65X-0120	40	End Cover Set Screw 2.6x20 (x2)	41-STP26X200
10	Collar Spring	41-CL65-0130	41	Capacitor	41-CL4-0441
11	Bit Lock Ball		42	Condenser (x2)	41-CL3NL-0440
	For HIOS Shank 2.5	220056	43	Carbon Brush (x2)	41-CL65-0490
	For HEX Shank 2.0	220054	44	Carbon Brush Cap (x2)	41-CL65-0500
12	Joint Shaft		45	Body Case A & B	41-SS65-0440
	For HIOS Shank	41-CL65-0150	46	Mark Label	41-SS65-0070
	For HEX Shank	41-CL65X-0150	47	Switch Cover Set Screw 3x8 (x4)	220207
13	Clutch Supporter	41-CL65-0160		Switch Assembly 48 – 59 (w/o 55,56)	41-SS65-SW
14	Joint Shaft Lock Pin 2x11.8	41-DL10-0180	48	Switch Cover Joint Screw 2.6x5 (x2)	41220217
15	Joint Shaft Set Screw 3x3	41-SH30x030	49	Switch Cover A & B	41-SS65-0530
	Gear Assembly 16 – 27	41-SS65-GR	50	Terminal Holder (x4)	41-CL4-0550
16	Gear Case Cover	41-SS65-2221	51	Noise Filter B (x2)	41-A45-0630
17	Clutch Ball 5.5	220068	52	For/Rev Switch	41-CL65-0590
18	Internal Gear	41-SS65-0240	53	Starting Switch	41-CL4-0570
19	Gear Case (w/roller bearing)	41-SS65-3222	54	5-Pin Connector	41-CL4-0580
20	Thrust Bearing 6x12 (x2)	41-CL65-0250	55	Switch Lever Spring	41-CL65-0610
	Lower Planet Cage Assembly 21 – 23	41-CL65-3260	56	Switch Lever	41-CL65-0640
21	Lower Planet Cage	41-CL65-0260	57	Switch Lever Plunger	41-CL65-0620
22	Planet Gear (x6)	41-CL65-0270	58	Plunger Spring	41-CL65-0630
23	E-Ring (x6)	41-CL65-0280	59	Hanger	41-CL65-0650
24	Gear Washer	41-CL4-0290	60	5-Core Cord w/Connector in both ends	41-CL65-0660
25	Center Pin	41-CL65-0300	61	Free-Up Belt	41-CL65-0670